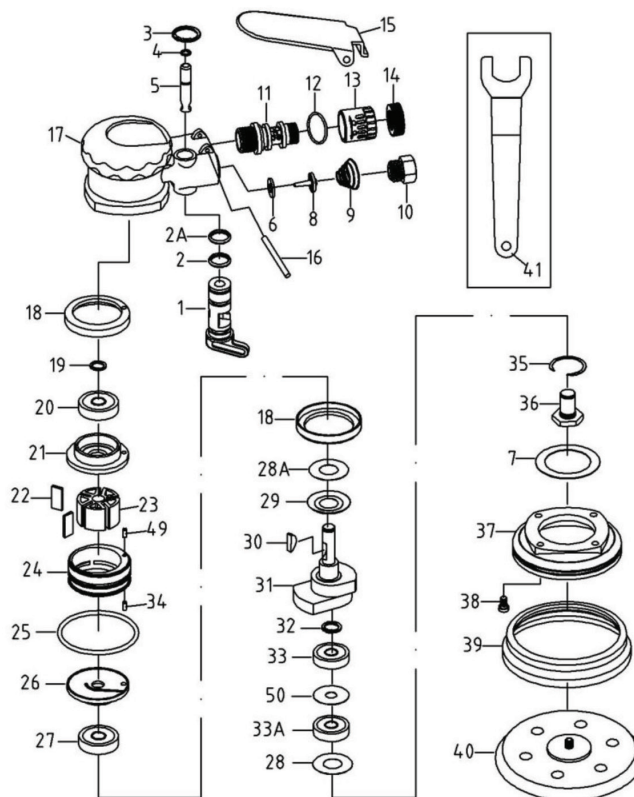


Model No. TLZ142
5" Dual-Action Air Sander

aurora tools[®]



| Part No. | Model No. | Description | Qty |
|----------|-----------|----------------|-----|
| 1 | OB-01 | Regulator | |
| 2 | OB-02 | O-Ring (P10) | 1 |
| 2A | ST120A03 | O-Ring (S10) | |
| 3 | OB-30 | Snap Ring | 1 |
| 4 | OB-04 | O-Ring | 1 |
| 5 | OB-05 | Valve Stem | 1 |
| 6 | OB-06 | Washer | 1 |
| 7 | OB-16.1 | Washer | 1 |
| 8 | STOB-08 | Valve | 1 |
| 9 | OB-09-1 | Spring | 1 |
| 10 | 70426 | Air Inlet | 1 |
| 11 | OB-11 | Muffler Body | |
| 12 | OB-11.1 | O-Ring | 1 |
| 13 | OB-11 | Exhaust Sleeve | |
| 14 | OB-11 | Nut | |
| 15 | OB-13 | Lever | 1 |
| 16 | OB-14 | Pin | 1 |

| Part No. | Model No. | Description | Qty |
|----------|------------|---------------------------|-----|
| 17 | STOB-15-3 | Housing | 1 |
| 18 | OB-16.2 | Rubber Bushing | 2 |
| 19 | 70410 | Snap Ring | 1 |
| 20 | 70048A | Bearing (6000ZZ) | 1 |
| 21 | STOB-19 | Rear Plate | 1 |
| 22 | OB-20-2 | Rotor Blade | 5 |
| 23 | STOB-21 | Rotor | 1 |
| 24 | STOB-22 | Cylinder | 1 |
| 25 | OB-24 | O-Ring | 1 |
| 26 | STOB-25 | Front Plate | 1 |
| 27 | OB-26A | Bearing (6002ZZ) | 1 |
| 28 | OB-28.1 | Washer | 1 |
| 28A | OB-28 | Washer | 1 |
| 29 | E-29 | Washer | 1 |
| 30 | ST70407 | Rotor Key | 1 |
| 31 | ST25-100-5 | Motor Shaft Balancer (5") | 1 |
| 32 | OB-30 | Snap Ring | 1 |

| Part No. | Model No. | Description | Qty |
|----------|--------------|------------------|-----|
| 33 | OB-31.3 | Bearing (6001LU) | 1 |
| 33A | OB-31.4 | Bearing (6001) | 1 |
| 34 | 81326 | Pin (3*8) | 1 |
| 35 | OB-33 | Snap Ring | 1 |
| 36 | S560-34 | Shaft | 1 |
| 37 | OB-35.7 | Housing Cover | 1 |
| 38 | OB-36 | Screw | 4 |
| 39 | OB-37 | Shroud (N5) | 1 |
| 40 | BTOB-38-5VOY | Hook-Up Pad (N5) | 1 |
| 41 | BTOB-39-22 | Stop Spanner | 1 |
| 49 | OB-101-23 | Pin (3*14L) | 1 |
| 50 | OB-23.2A | Shim | 1 |