

# XH15.XH25

## Operation and Service Manual

BEFORE OPERATING THE LIFT TABLE, READ THIS MANUAL CAREFULLY AND UNDERSTAND COMPLETELY. KEEP THIS MANUAL ON FILE FOR FUTURE REFERENCE. IF THIS IS LOST, PLEASE CONTACT YOUR LOCAL SUPPLIER FOR A NEW COPY. ALSO, IF THE WARNING/CAUTION DECAL ON THE UNIT IS LOST, PLEASE CONTACT YOUR LOCAL SUPPLIER FOR A NEW DECAL.

NOTE: On this manual, WARNING means the danger, which can lead to death or serious injury. CAUTION means the danger, which can lead to slight injury or property damage.

### 1. WARNING

1. DO NOT allow other person to stand in front of or behind lift table when it is moving.
2. DO NOT move lift table when table is in raised position. Load could fall down.
3. DO NOT enter under table.
4. DO NOT overload lift table.
5. DO NOT put foot in front of rolling wheels. Injury could result.
6. WATCH difference and hardness of floor level when moving lift table. Load could fall down.
7. DO NOT use lift table on slope or inclined surface, lift table may become uncontrollable and create danger.
8. DO NOT lift people. People could fall down and suffer severe injury.

### 2. CAUTION

1. Read this operation manual carefully and understand completely operating lift table. Improper operation could create danger.
2. This lift table is a movable lifter designed to lift or lower rated load on table. NO NOT use lift table for other purpose than its intended use.
3. DO NOT allow person to operate lift table who does not understand its operation.
4. Brake lift table before use the lift table.
5. DO NOT put the load at the side of the table.
6. DO NOT put the instability or unbalanced load on the table.
7. Practice maintenance work according to service instructions.
8. DO NOT modify lift table without manufacturers written consent.
9. REMOVE load from table and lower the table to bottom when servicing lift table.
10. This lift table is not designed to be water resistant. Use lift table in dry condition.

### 3. DAILY INSPECTION

Daily inspection is effective to find the malfunction or fault on lift table. Check lift table on the following points before operation.

<b>CAUTION</b>
----------------

DO NOT use lift table if any malfunction or fault is found.
---

- (1) Check for scratch, bending or cracking on the lift table.
- (2) Check if there is any oil leakage from the cylinder.

- (3) Check the vertical creep of the table.
- (4) Check the smooth movement of the wheel.
- (5) Check the function of brake.
- (6) Check if all the bolt and nuts are tightened firmly.

#### 4. OPERATING LIFTTABLE

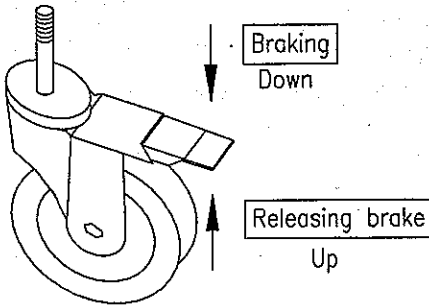
##### 4-1. How to use the brake.

**CAUTION**

Brake lift table when not moving in order to prevent sudden movement.

The brake is equipped with the swivel caster on the top.

- (1) Braking the wheel, press the brake pedal.
- (2) Releasing the brake, lift up the brake pedal.



##### 4-2 Lifting the table

**WARNING**

1. DO NOT overload lift table, stay within its rated capacity.
2. DO NOT put the load at the side of the table.

Press the lifting pedal several times until the table reaches the desired position.

The table does not elevate after reaching the highest position even if the lifting pedal is pressed.

The table lowers slightly after reaching the highest position.

##### NOTE:

The hydraulic cylinder is designed to hold table. As is the nature of the hydraulic system, table lowers very slowly over and extended period of time, Please note the table does not stay at the same position indefinitely.

##### 4-3. Lowering table

**WARNING**

DO NOT put foot or hand between the table and the chassis.

Step on lowering lever and table lowers.

#### 4-4. Adjusting the Angle of the table.

### WARNING

The table must be kept level when the load is over 150Kg

The table can be adjusted to meet the requirements.

4-4.1. Remove the load before adjusting the table.

4-4.2. Pull out the pin lock and adjust the table to the desired position.

4-4.3. Set down the pin lock to lock the table.

Attention: Make sure the pin lock locks into the hole.

## 5. Specifications

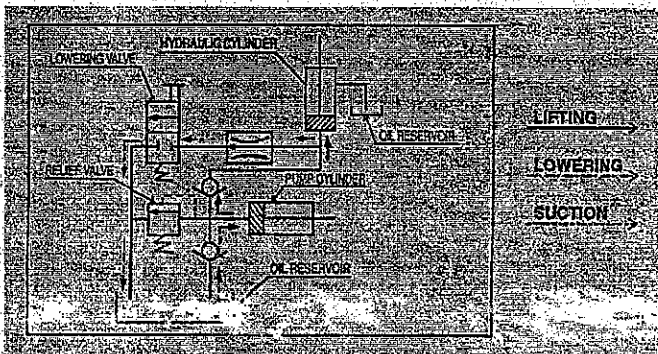
Model	Capacity (kg)	Table (mm)	Table Height (mm)	Stroke	Pedal to top. (approx. times)	Wheel (mm) $\phi$	Weight (kg)
XH15	150	503×405	725-1085	360	≤55	76	38
XH25	250	503×405	725-1085	360	≤60	76	40

## 6. Service instruction

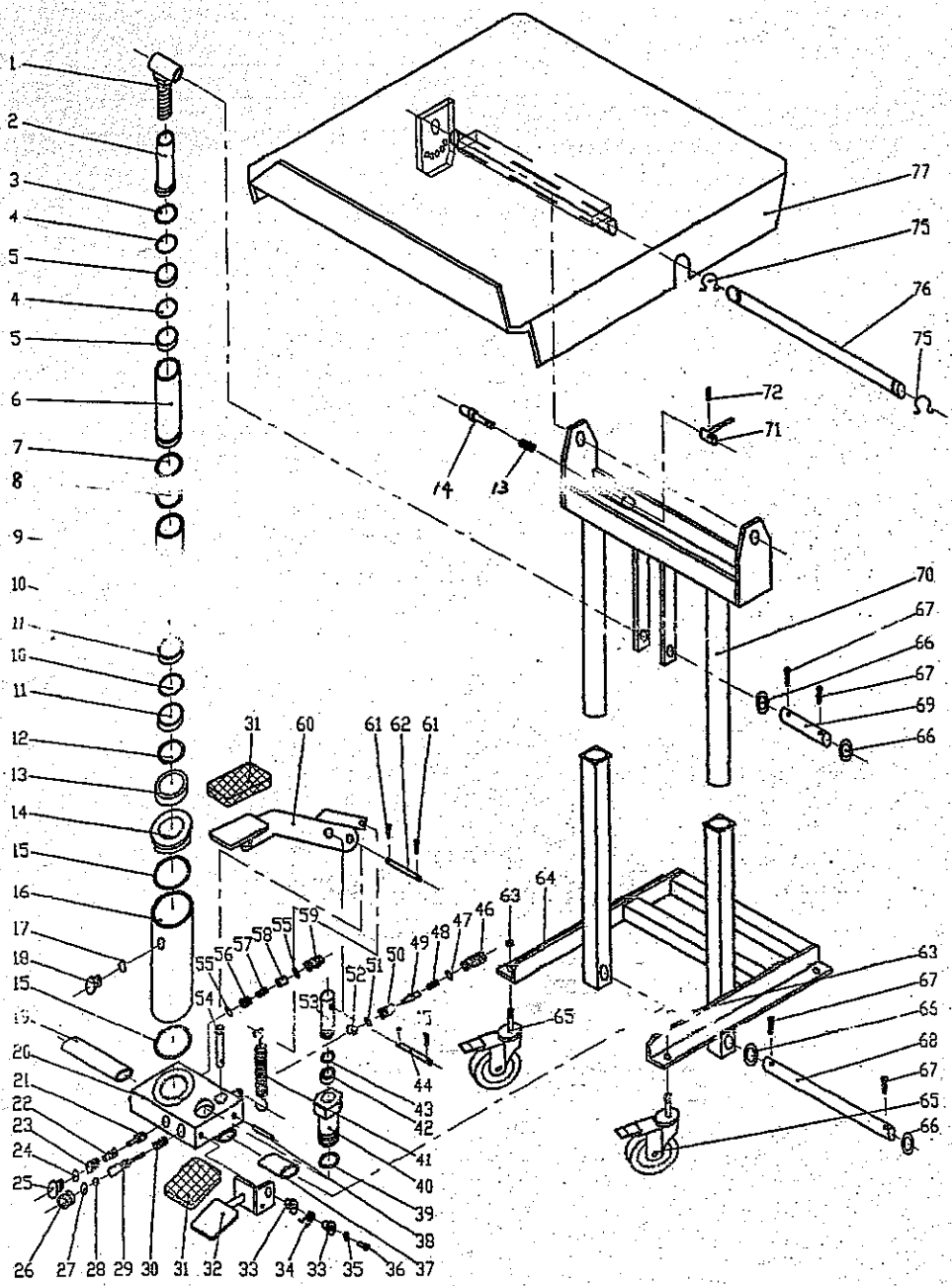
6.1. Lubricate each point described below every month:

6.2. Change hydraulic oil every 12 months.

## 7. Hydraulic Circuit



# XH15.XH25



## XH15, XH25

NO	DESCRIPTION	QT
1	Mandril	1
2	Piston rod	1
3	Retainer ring 24	1
4	O-ring 21.2×2.65	2
5	Guiding ring $\phi 20 \times 4 \times 8 \ 1.5$	2
6	Piston rod	1
7	Block ring	1
8	O-ring 34.5×2.65	1
9	Cylinder tube	1
10	O-ring 30×2.65	2
11	Guiding ring $\phi 28 \times 6.1 \times 8 \ 2.5$	2
12	O-ring 34.5×1.8	1
13	Nut	1
14	Cover	1
15	O-ring 69×2.65	2
16	Reservoir cylinder	1
17	O-ring 14×2.4	1
18	Bolt for oil feeder	1
19	Longer bush	1
20	Valve body	1
21	Spring base	1
22	Spring for valve	1
23	Bolt for valve	1
24	O-ring 16×1.8	1
25	Cover	1
26	Guiding bush	1
27	O-ring 10.6×2.65	1
28	O-ring 4×1.8	1
29	Rod	1
30	Spring	1
31	Pedal cover	2
32	Lever	1
33	Lever bush	2
34	Torsion spring	1
35	Spring washer 8	1
36	Hex socket screw bolt M8×30	1
37	Shorter bush	1
38	Pin bolt 6×28	1
39	O-ring 17×2.65	1

NO	DESCRIPTION	QT
40	Pump body	1
41	Tension spring	1
42	Y-ring $\phi 16 \times \phi 8 \times 6$	1
43	O-ring 20×2.4	1
44	Pin bolt 8×40	1
45	Split pin 2×12	2
46	Bolt for single-way valve	1
47	O-ring 10×1.8	1
48	Spring for single-way valve	1
49	Single-way valve	1
50	Bush for single-way valve	1
51	O-ring 6.9×1.8	2
52	Steel ball $\phi 7$	1
53	Pump plunger	1
54	Tension rod	1
55	O-ring 15×2.65	2
56	Valve for controlling speed	1
57	Spring	1
58	Spring bush	1
59	Bush for speed control valve	1
60	Pedal	1
61	Split pin 1.6×10	2
62	Pin bolt 6×35	1
63	Self-locking nut M12	4
64	Chassis	1
65	3" swivel wheel	4
66	Washer 20	4
67	Split pin 5×36	4
68	Pin	1
69	Pin	1
70	Table bracket	1
71	Handgrip	1
72	Tension pin 4×12	1
73	Spring	1
74	Restrictive pin	1
75	Retainer ring 13	2
76	Pin	1
77	Table	1